

KING 2

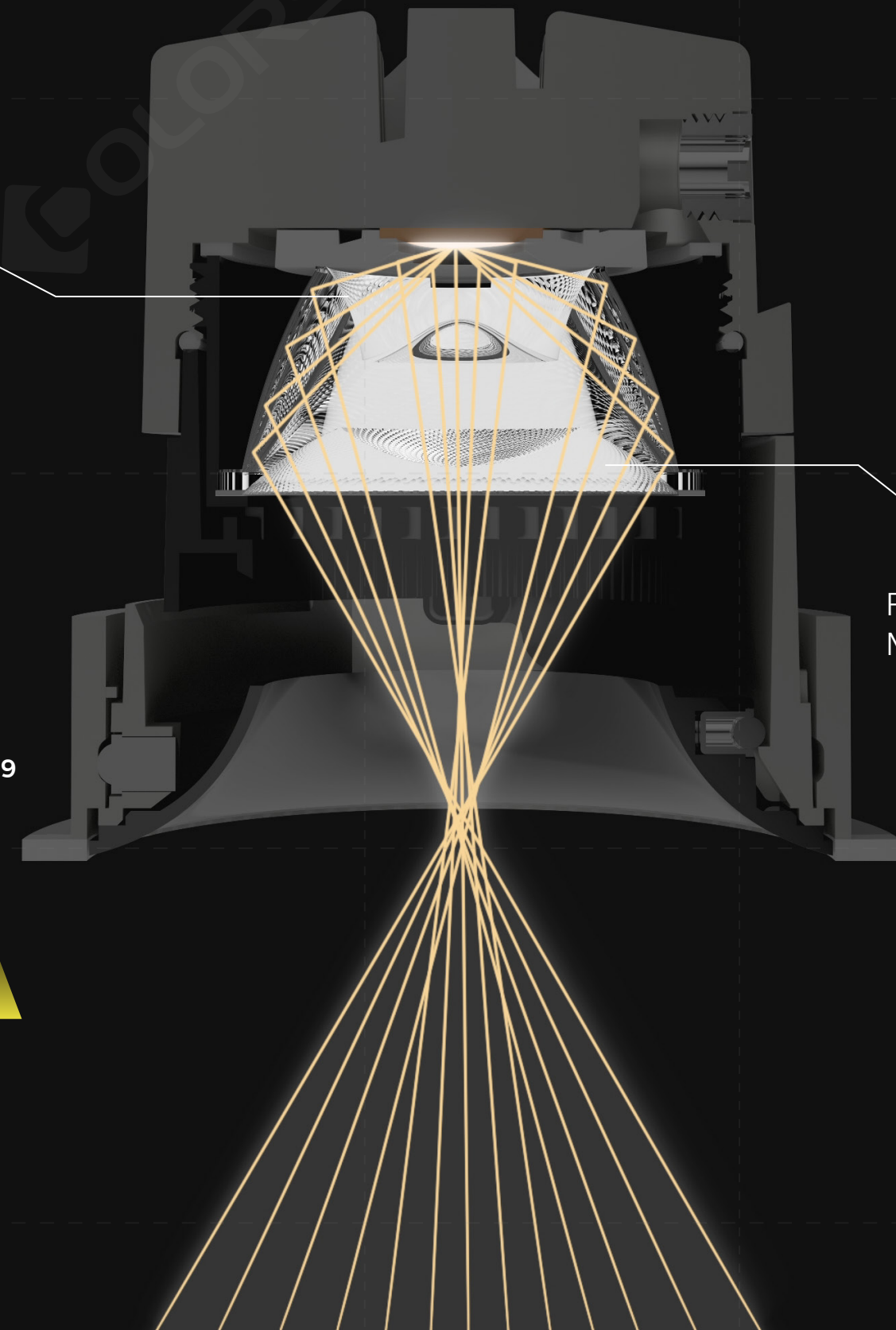
115LM/W, UGR<1

Full metal body design, Small size, High power



Patented Lens Design

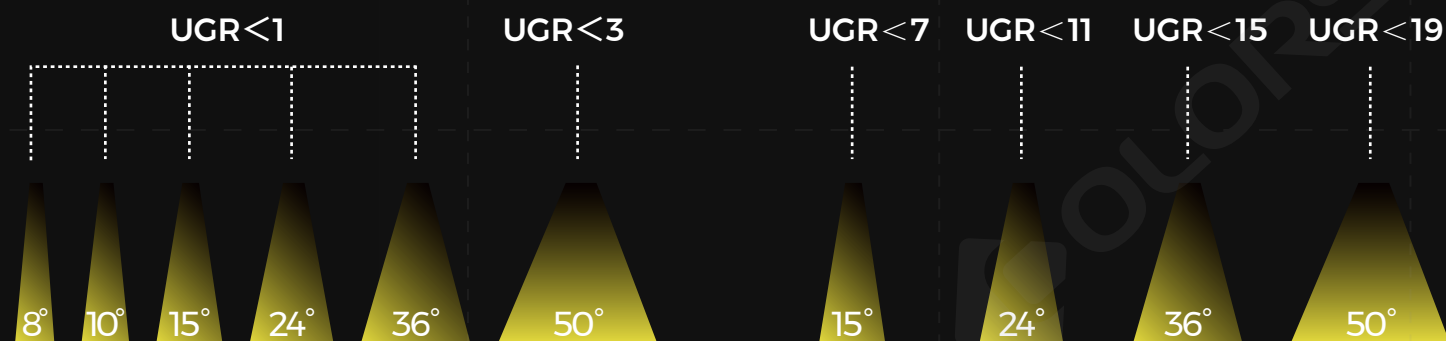
Naked-eye visible anti-glare optical technology enables healthy and comfortable lighting conditions.



COLORS®

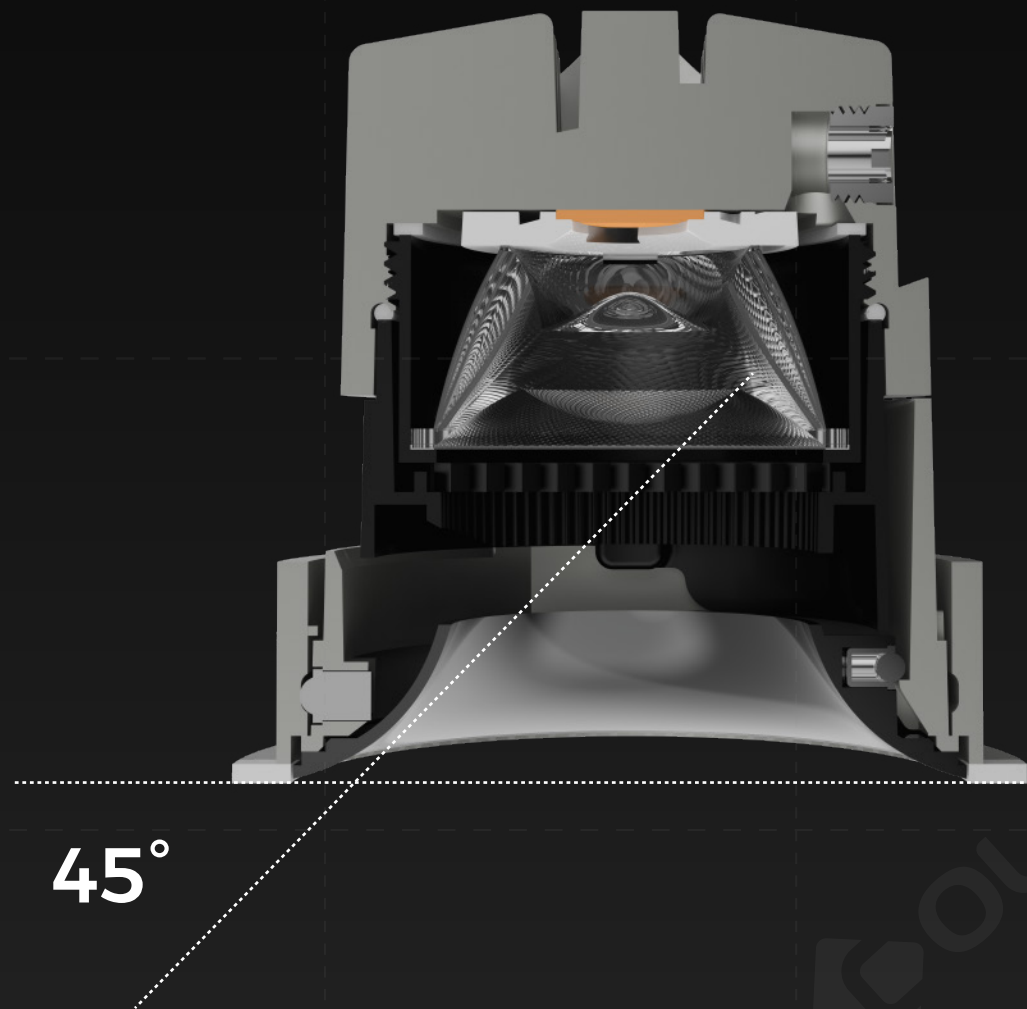
VS

Others



Deep Anti-glare High Efficiency

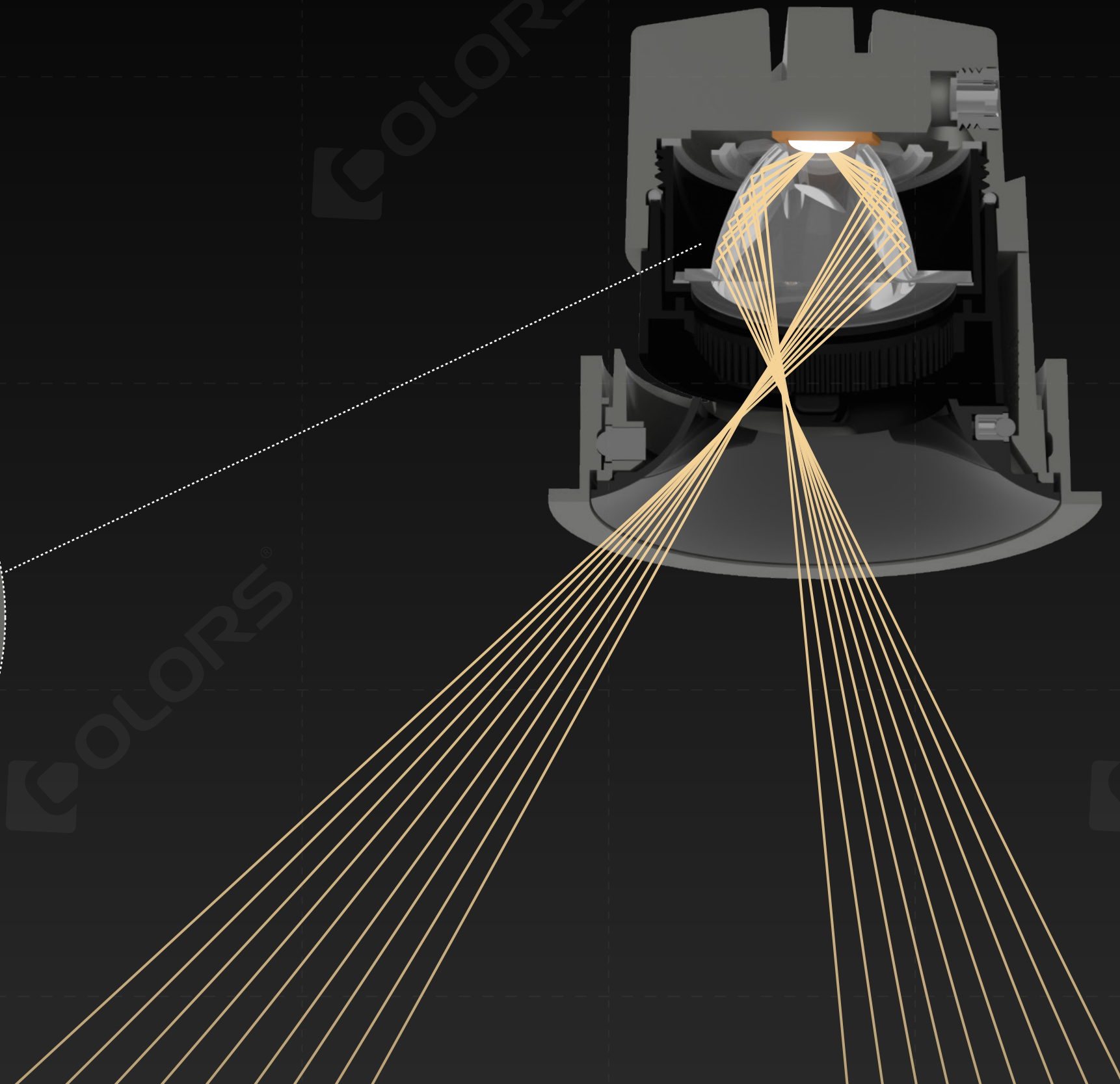
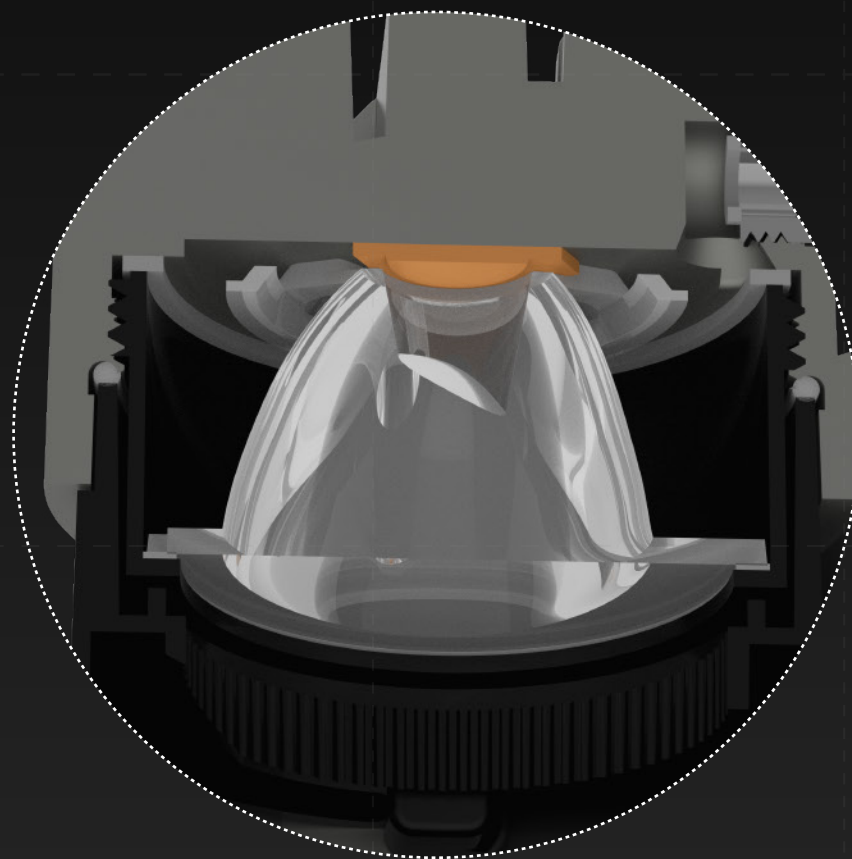
Cut-off angle $>45^\circ$, 115LM/W



Asymmetrical Professional Lens Design

Dual Polarization Technology

Optical design that returns beauty to its essence

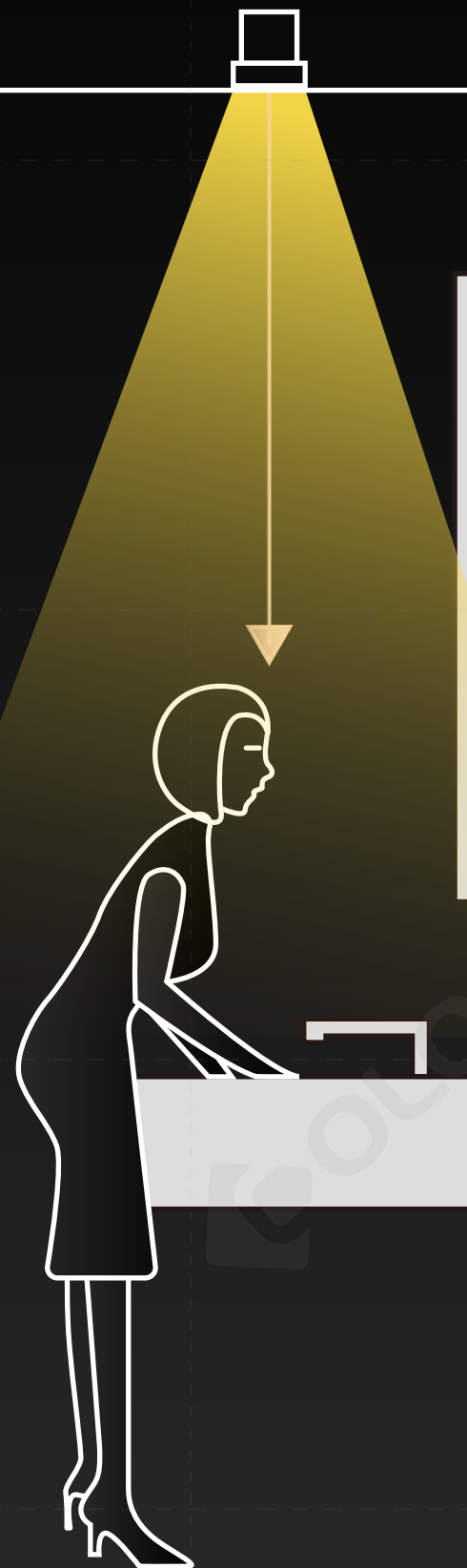


Vanity Downlight

Provides enough light for users without the need for additional wall lights.

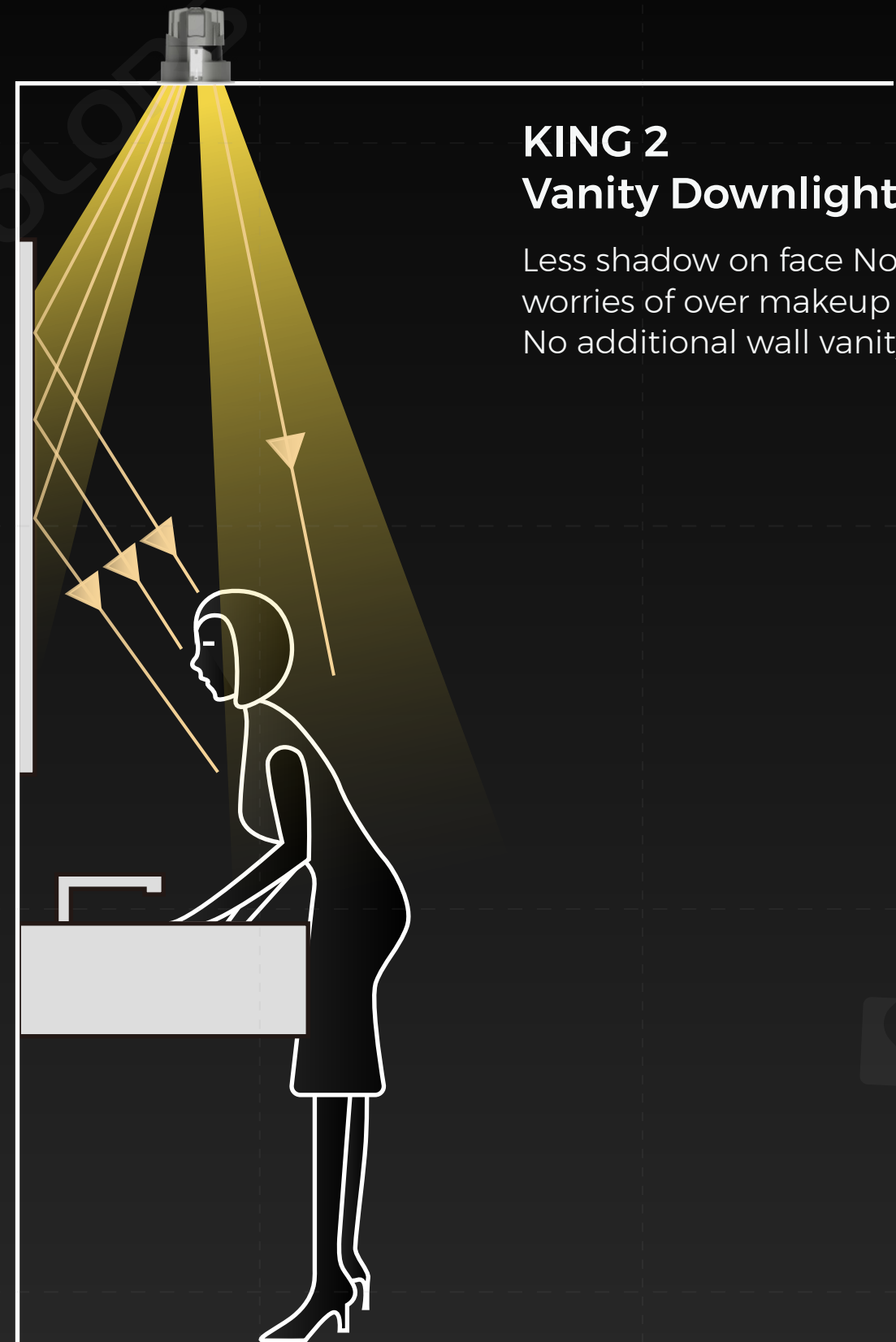
Ordinary Downlight

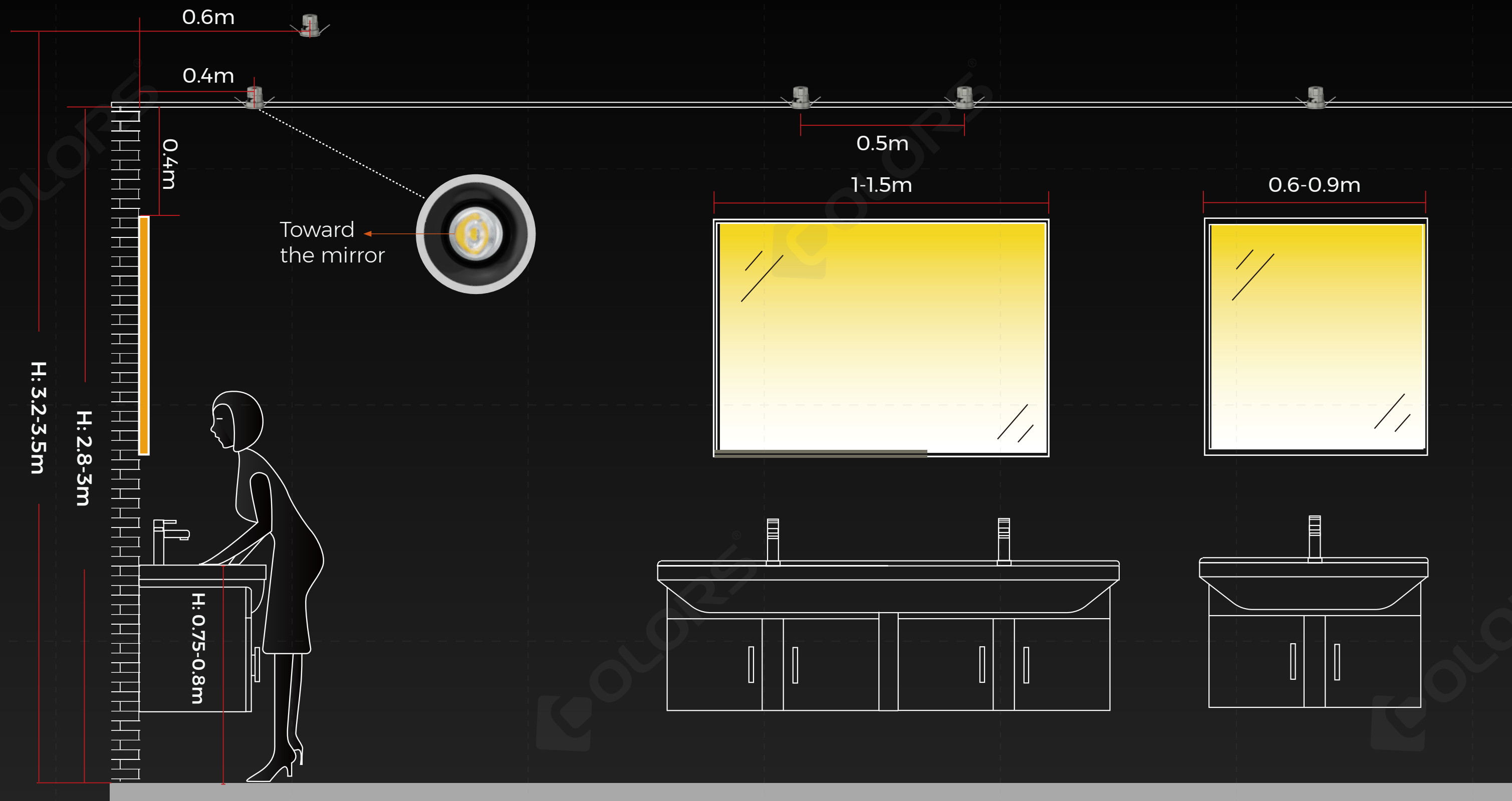
Single light source with severe dark areas, prone to creating uneven facial lighting effects.



KING 2 Vanity Downlight

Less shadow on face No
worries of over makeup
No additional wall vanity lights





Superior Industrial Design

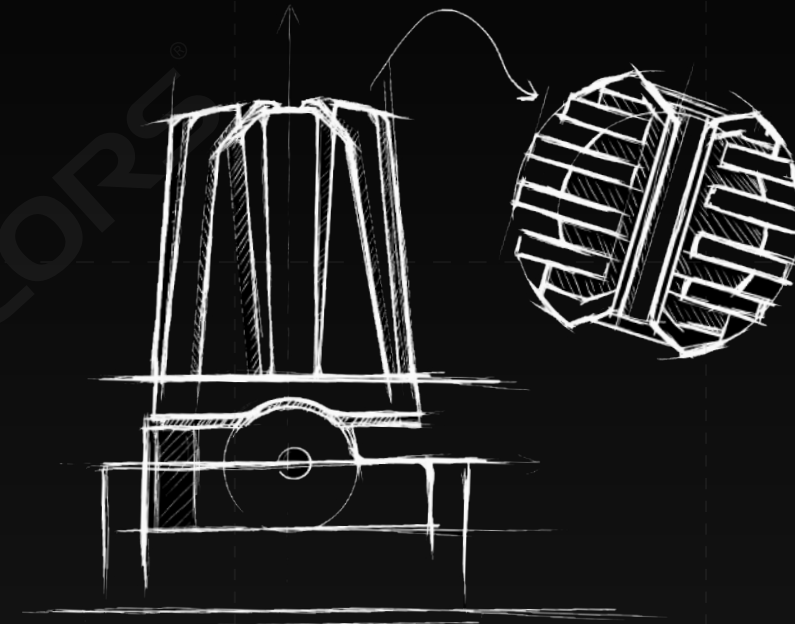
Technological and natural aesthetics combined

Sports Cars

Taking a cue from BMW's concept sports car, it inherits its futuristic and technological feel.

Rock

The product has the layers and hard appearance of mountain rock, and the coldness highlights the product's focus on function.

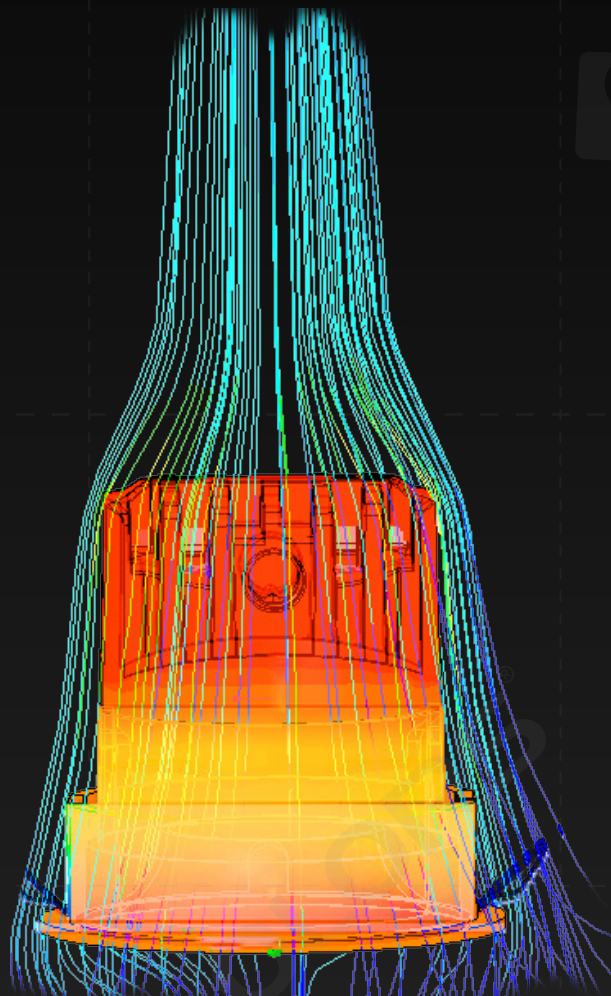
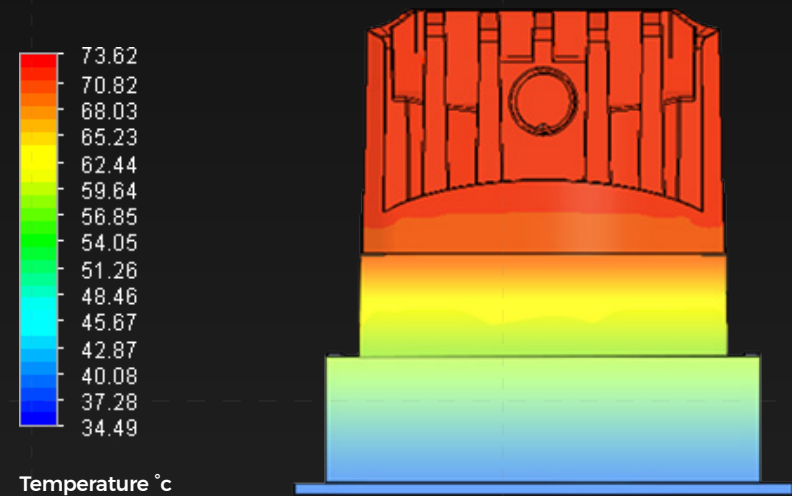


Rigorous Thermal Design Management

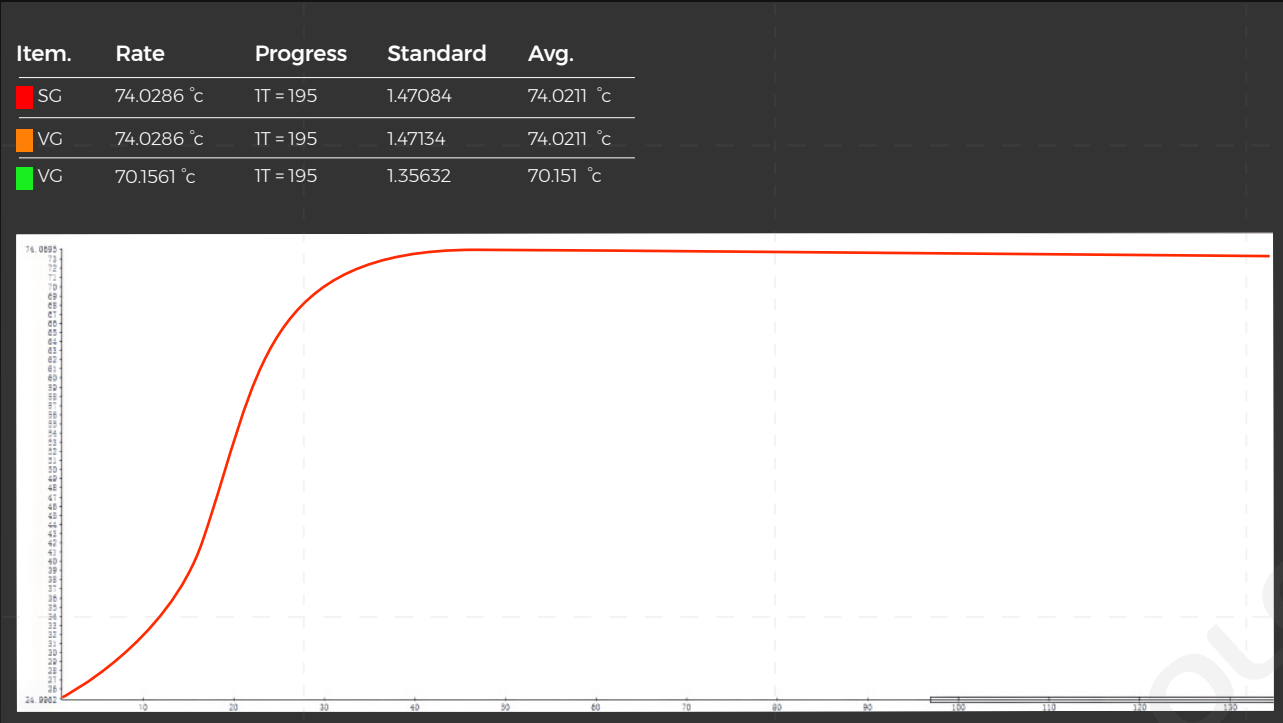
Longer luminaire life, reliable and stable quality



LED Downlight Heat Dissipation Simulation



Curve of TC point temperature after lighting

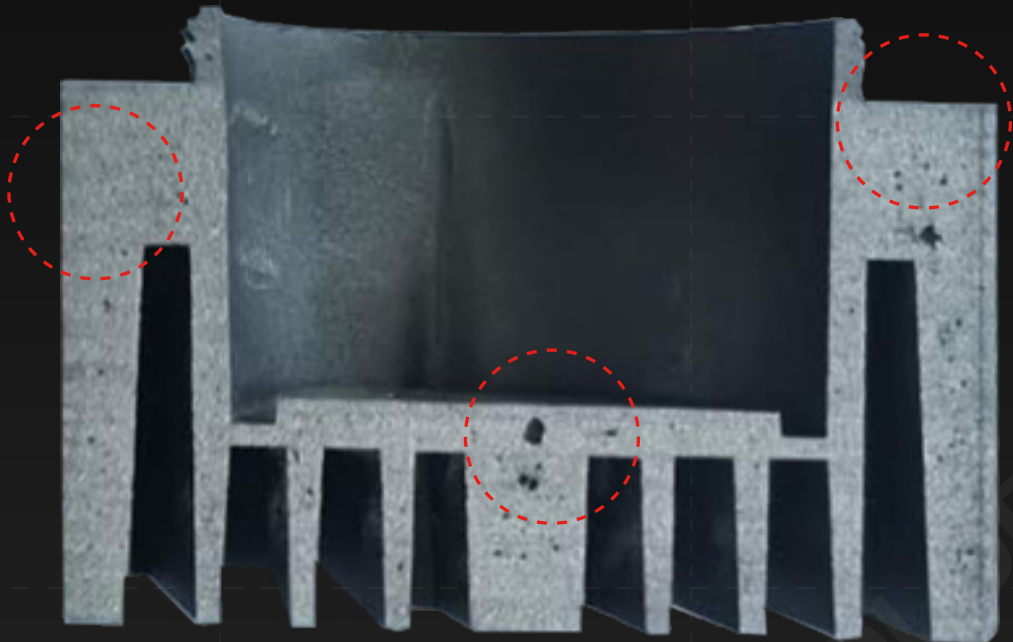


Strict manufacturing process

Stronger heat dissipation ability

Competitor's

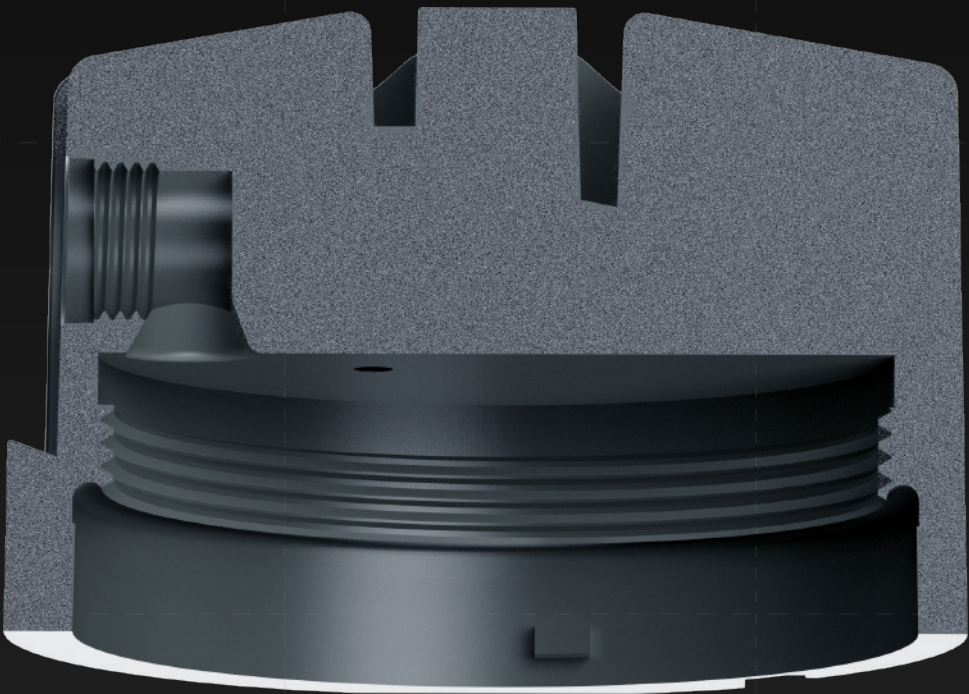
Downlight radiator
section



VS

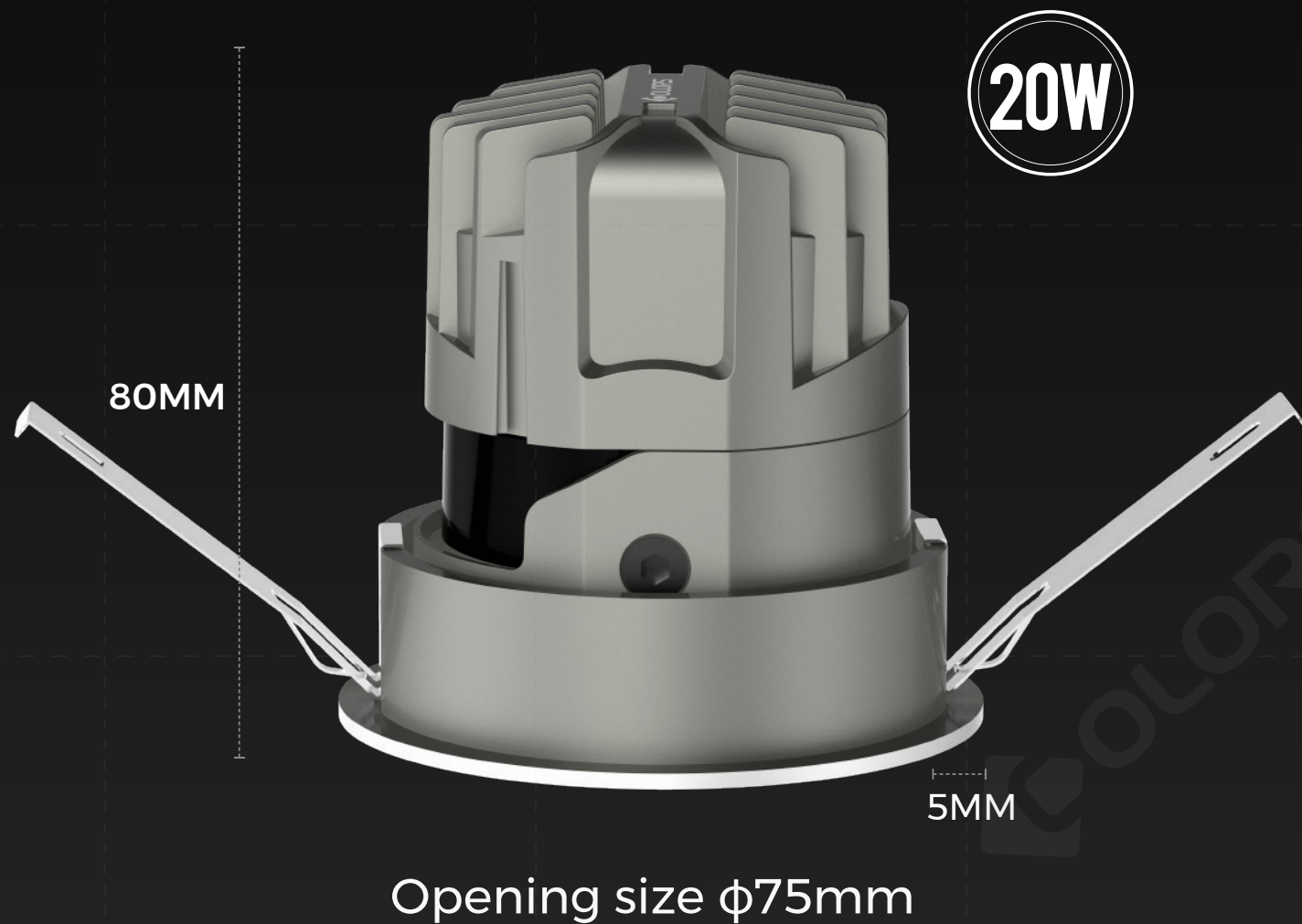
COLORS

Downlight radiator
section



Full Metal Body Design, Small Size, High Power

More exquisite appearance, better heat dissipation performance
φ75mm Max. power 20W, φ95mm Max. power 35W



Modular Design, Split Design

Multiple optics options, multiple reflectors available
Facilitates inventory stocking and replacement



Adjustable beam angle
(8°/10°/15°/24°/36°/50°)

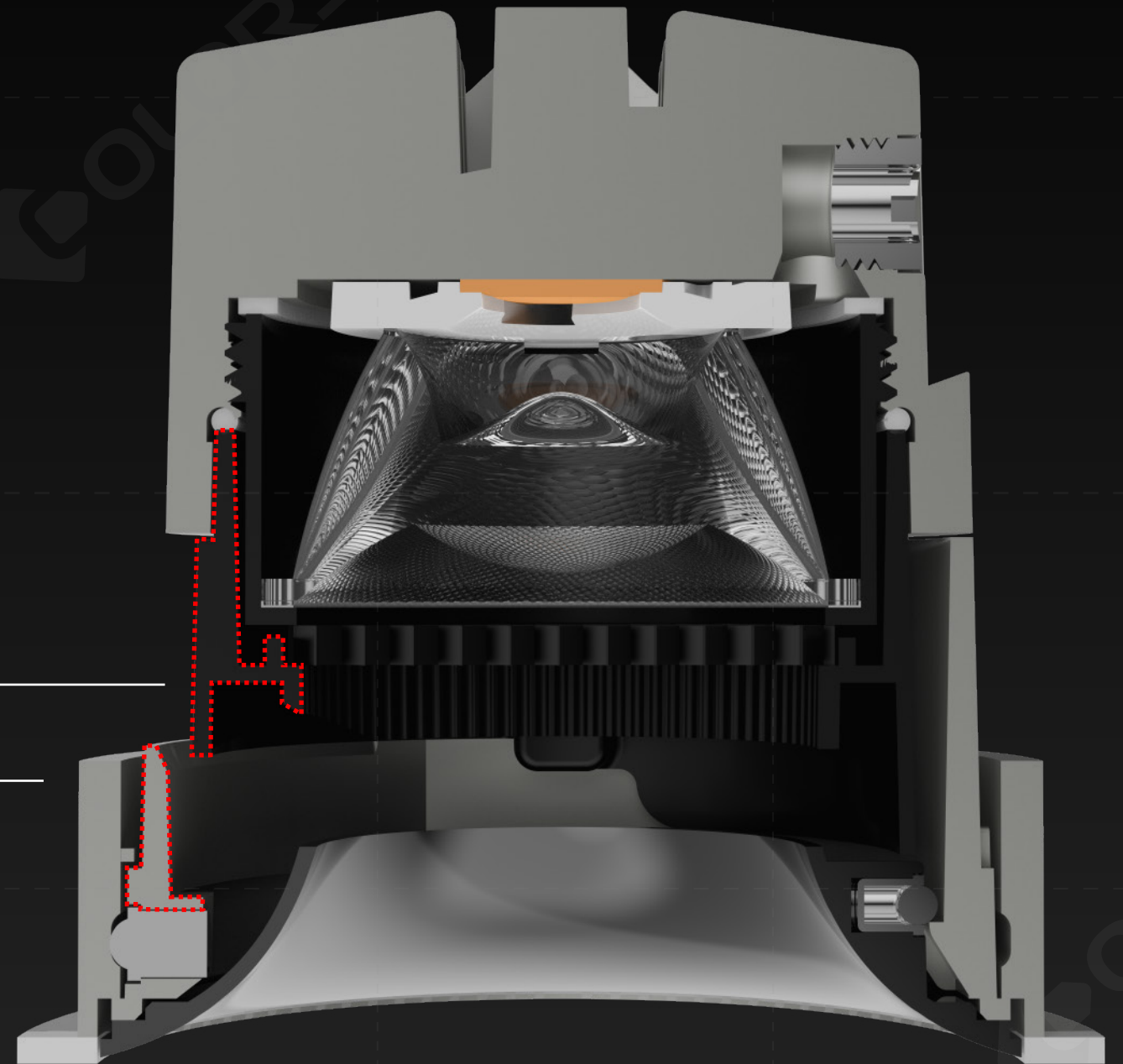
Color temperature options
(2700K/3000K/3500K/4000K/2700-6500K)

Matt black/Matt white/Champagne gold/Black chrome/Mirror

Anti-light Leakage Structure Design

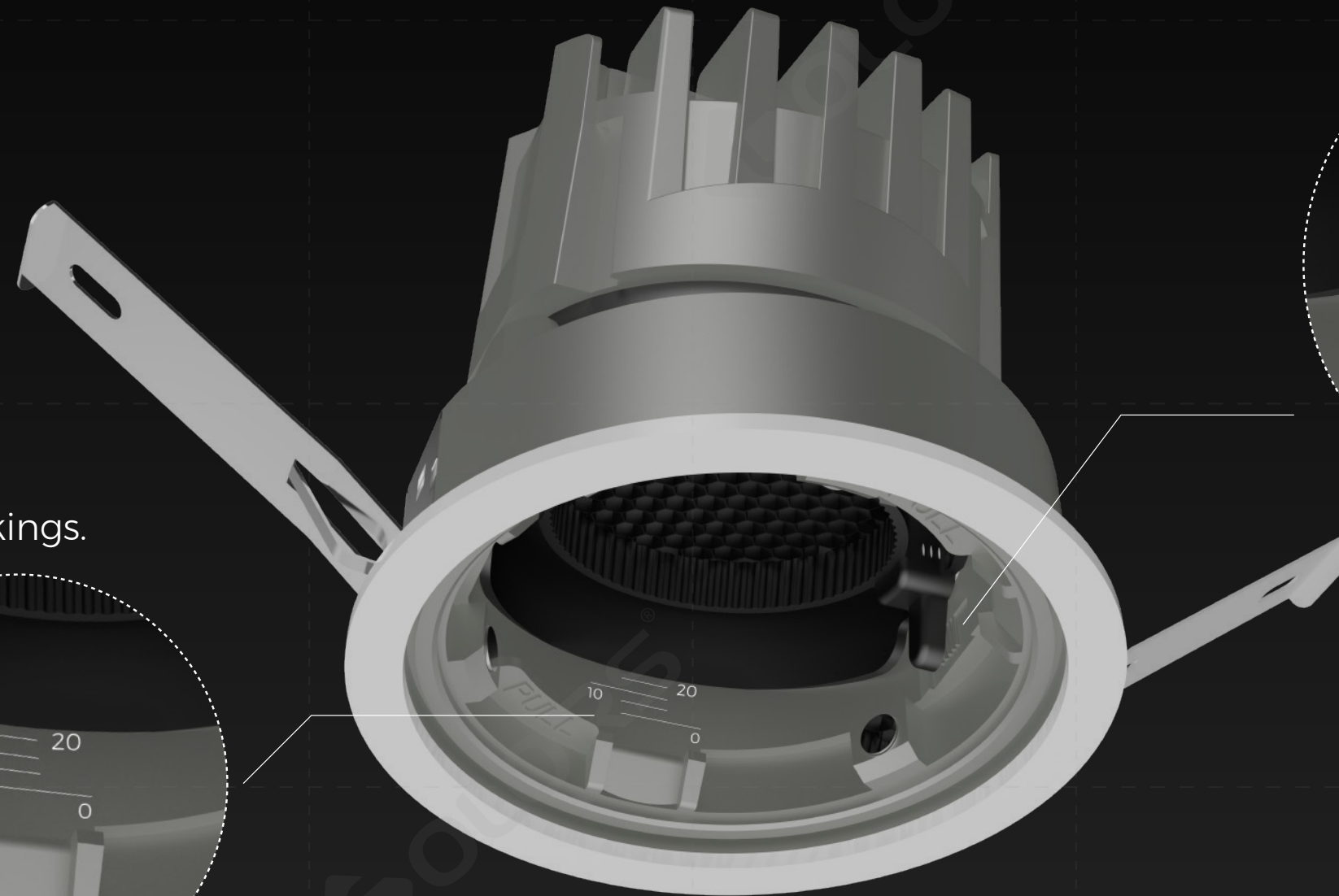
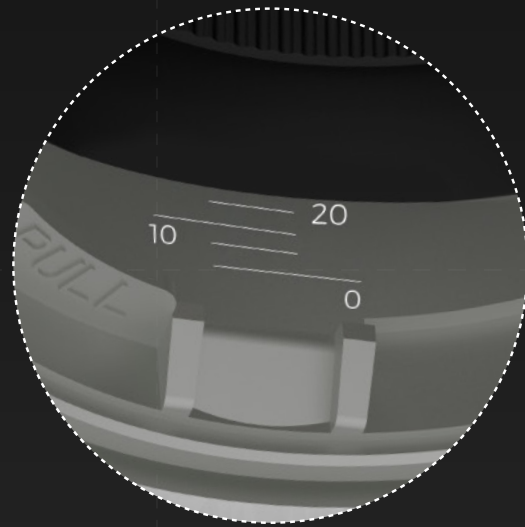
Controls light spillage to prevent light pollution and ensures more efficient light output into the intended space, maximizing utilization efficiency.

Anti-light leakage structure design



Adjustable Visual And Auditory Effects With Agile Adaptability

Precise adjustment scale
with clear calibration markings.

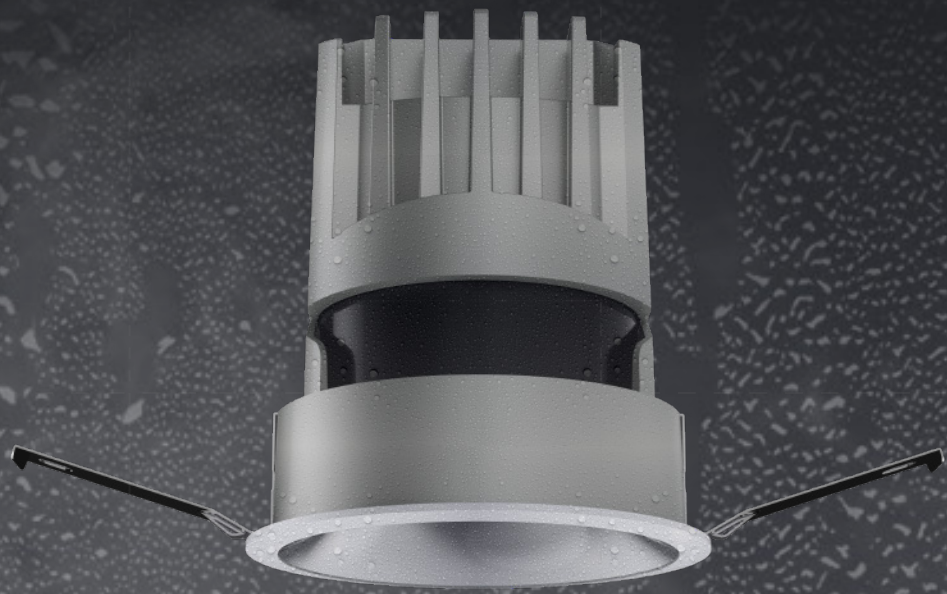


Real-time start/stop response
with precise positioning.



IP54-rated Waterproof Luminaire

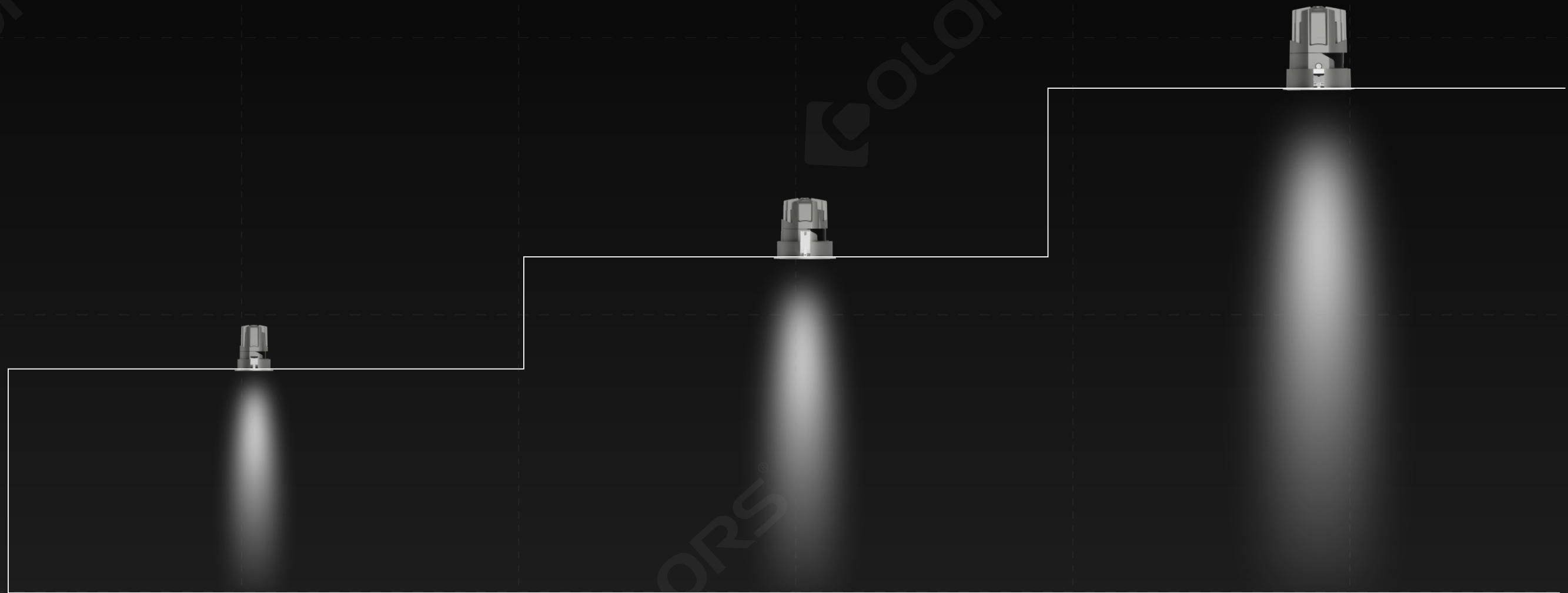
The product enables versatile application across multiple scenarios



Ergonomic Handle Design For Easy Installation And Removal



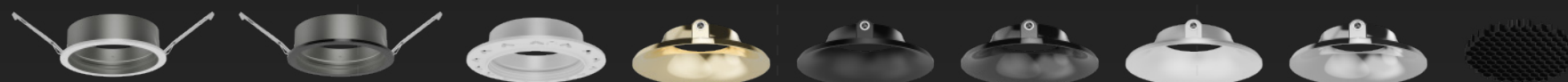
The Most Complete & Versatile Family of Lighting Solutions



φ55mm
12W
H ≤ 4M

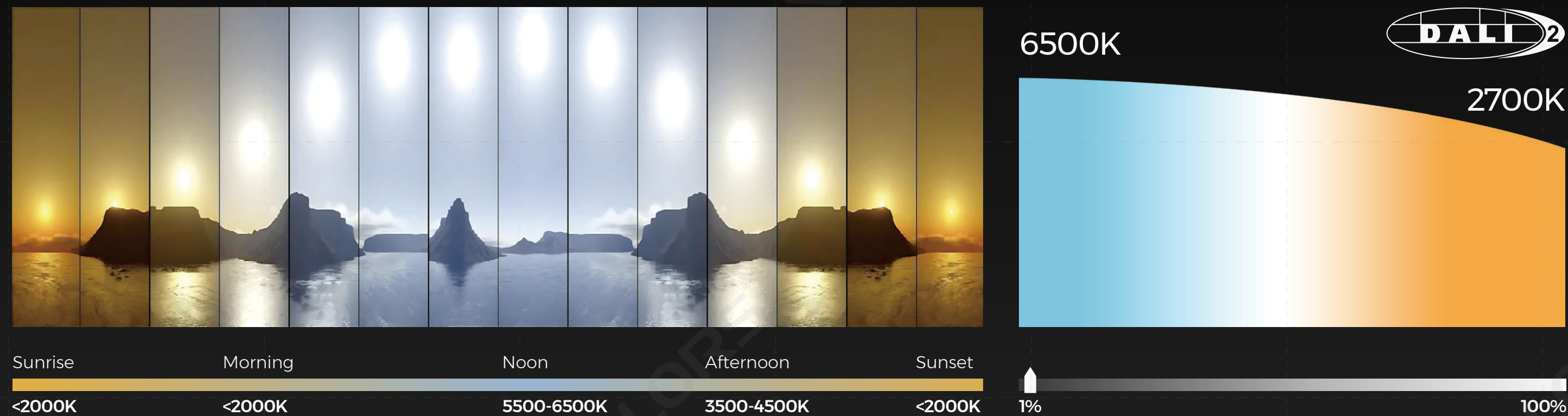
φ75mm
20W
H ≤ 6M

φ95mm
35W
H ≤ 9M



Adjust The Brightness And CCT For Individual Application

White and bright to warm and dim, tunable white gives character to its environment





LED LINEAR &
COMMERCIAL
LIGHTING



Tel: +86-755-2923-1888

E-mail: colors@colorsled.com

Web: www.colorsled.com

Add: 17F, Block B, Building 2, North of Skyworth

Inno Valley, Shiyan town, Bao'an District, Shenzhen